

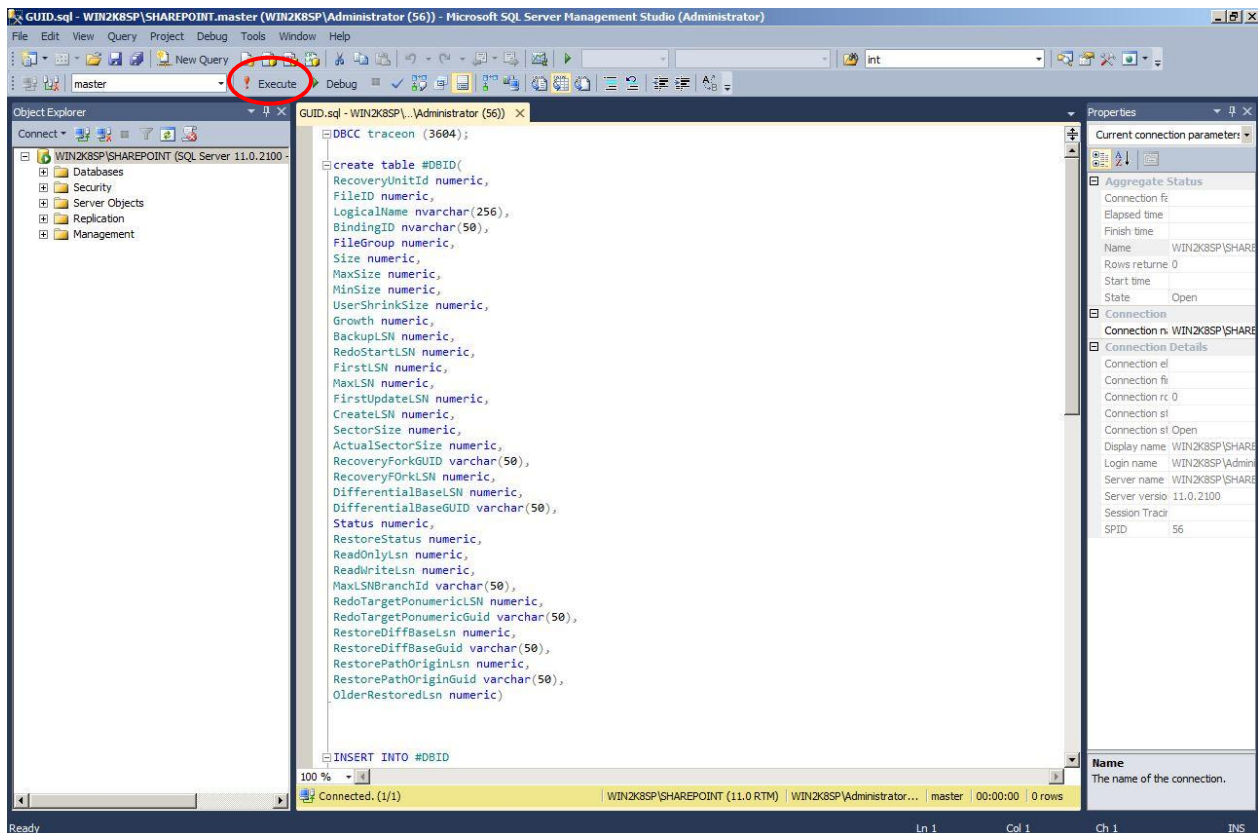
## PowerControls for SharePoint: GUID Collection Process

The recommended process for collecting the GUIDs used to generate your PowerControls for SharePoint license is to query the SQL Server(s) hosting your content database files. The queries are very fast and only read the required information. They will not write to or alter your databases or SQL environment.

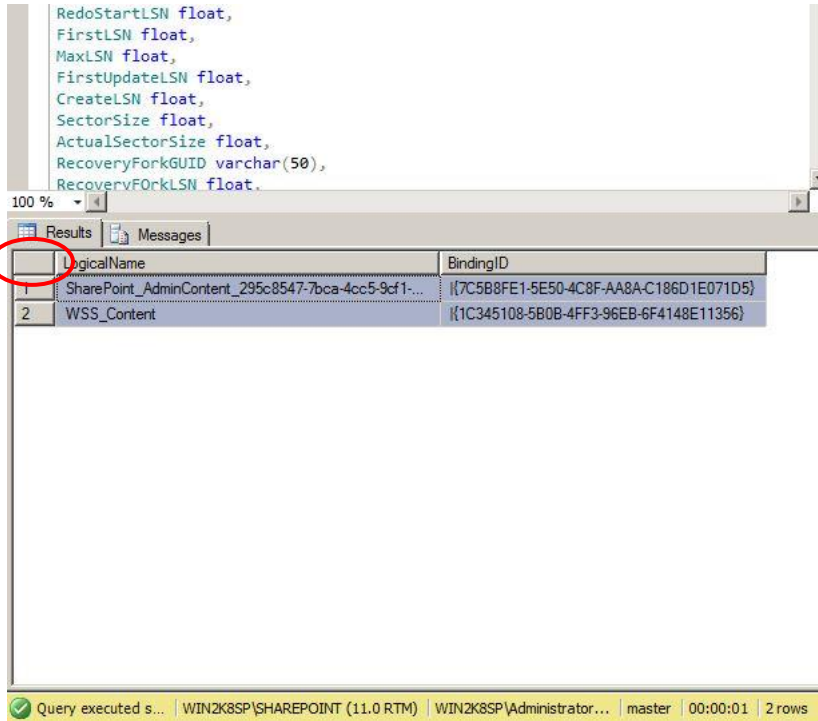
Queries have been pre-built and sent with this document. Follow the instructions below to run the query and create a text file containing the required GUIDs.

*Note: If the required SQL server is unavailable see [Alternate GUID Collection Methods](#) below.*

- 1) Open SQL Server Management Studio and provide login credentials.
- 2) Save and run the attached xxxxGUID.sql file that corresponds with the installed SQL version.
- 3) Once the query populates, run the query by clicking on Execute:

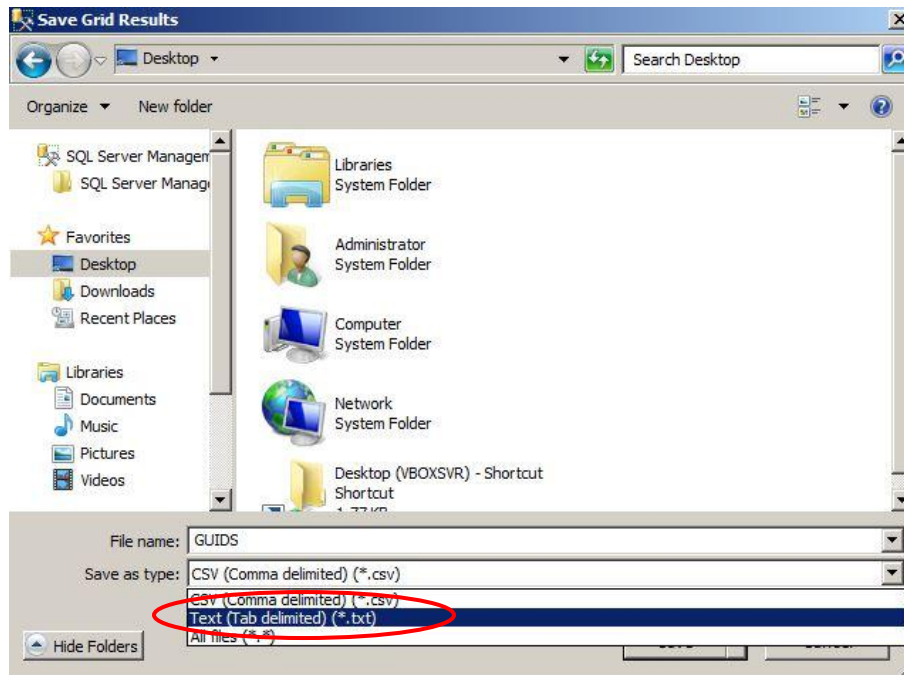


- 4) When the results pane appears click the top left button to highlight all results:



- 5) With the results selected right click the same button again select “Save Results As”.

- 6) This will open the Save Results dialog box:



- 7) Change the type to “Text (tab delimited)” (CSV if using SQL 2005) and name it GUIDS.

- 8) Provide the GUIDS.txt to your Ontrack Representative for generation of your license file.

## Alternate GUID Collection Methods

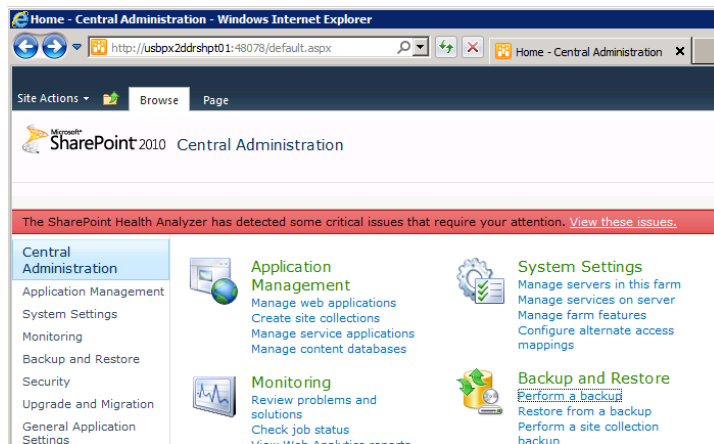
---

There are two alternate methods for obtaining the GUID information. Please use the method most convenient for your situation.

### Option 1: GUID collection using Ontrack PowerControls ExtractWizard

The most convenient method for acquiring content database GUIDs is from a Farm Backup with PowerControls Extract Wizard.

If a Farm Backup is not available you can make one through your Central Administration console:



Select "Perform a backup":

Microsoft SharePoint 2010 Central Administration > Perform a Backup - Step 1 of 2: Select Component to Back Up

Select the items you want to back up. Click **Next** to continue the backup process.

**Readiness**

- No backup or restore in progress. [Backup and Restore Job Status](#)
- Timer service is running.
- Administration service is running.

**Select component to back up**

Select the top-level component to back up. You can also click the name of a Web application to browse its contents.

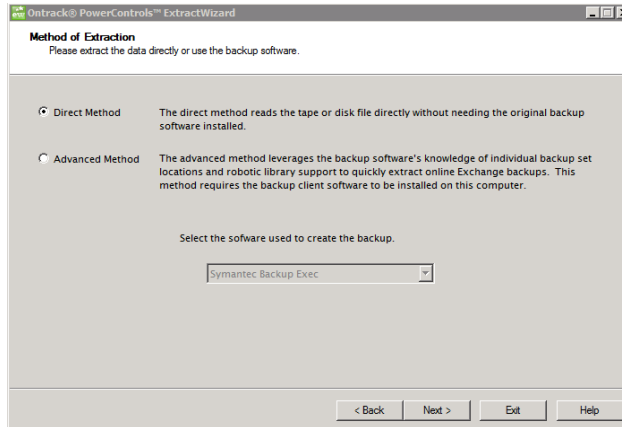
Select	Component	Type	Description
<input type="checkbox"/>	Farm	Farm	Content and configuration data for the entire server farm.
<input type="checkbox"/>	SharePoint_Config	Configuration Database	Configuration data for the entire server farm.
<input type="checkbox"/>	InfoPath Forms Services	Server Settings and Content	Administrator-approved content and settings for the server f
<input type="checkbox"/>	SharePoint Server State Service	State Service	Service for storage of temporary state information used by v
<input type="checkbox"/>	Microsoft SharePoint Foundation Web Application	Microsoft SharePoint Foundation Web Application	Collection of Web Applications
<input type="checkbox"/>	SharePoint - 80	Web Application	Content and configuration data for this Web application.
<input type="checkbox"/>	WSS_Content	Content Database	Content for the Web Application.
<input type="checkbox"/>	[Timer Jobs Group]	Backup Group	Collection of components grouped together for backup and r
<input type="checkbox"/>	WSS_Administration	Central Administration	Collection of Web Applications
<input type="checkbox"/>	SharePoint Central Administration v4	Web Application	Content and configuration data for this Web application.
<input type="checkbox"/>	SharePoint_AdminContent_f93b5a44-45ea-43cd-835e-bc029751f454	Content Database	Content for the Web Application.

The data unique to your SharePoint installation is stored in the content databases associated with your web applications. These are the files that you will use with PowerControls for SharePoint. To gain access to these files to collect the GUIDs, select your Farm and perform a backup.

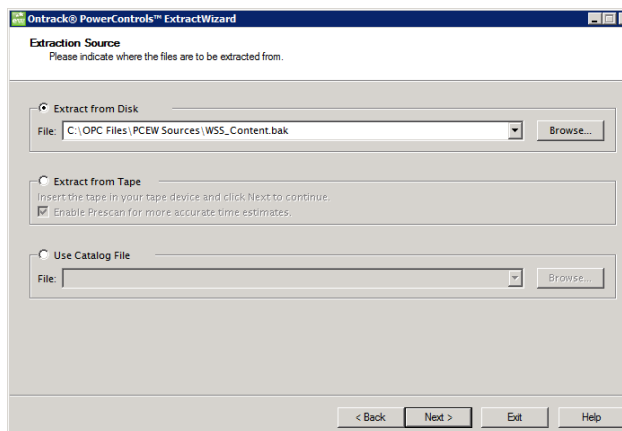
Now that you have your Farm Backup (or if you skipped to this point because you had one handy), open PowerControls Extract Wizard:



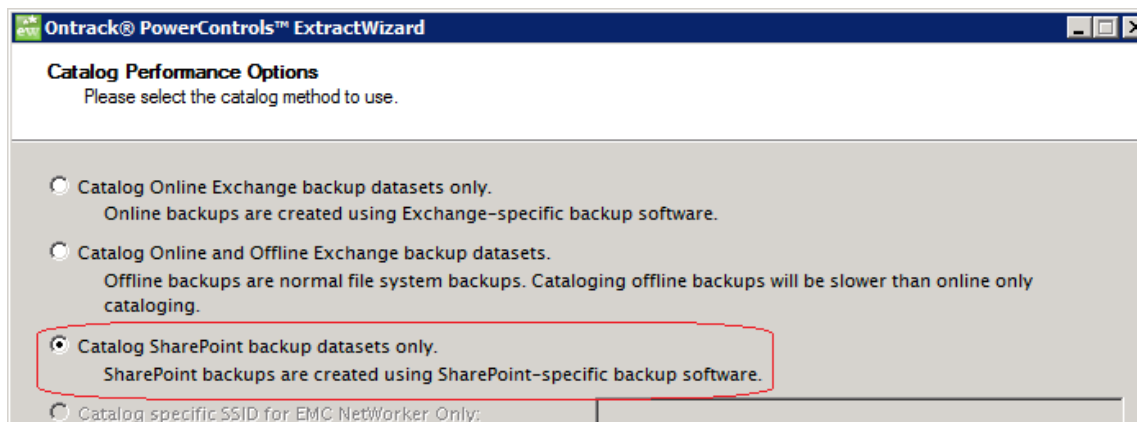
Select the Direct Method:



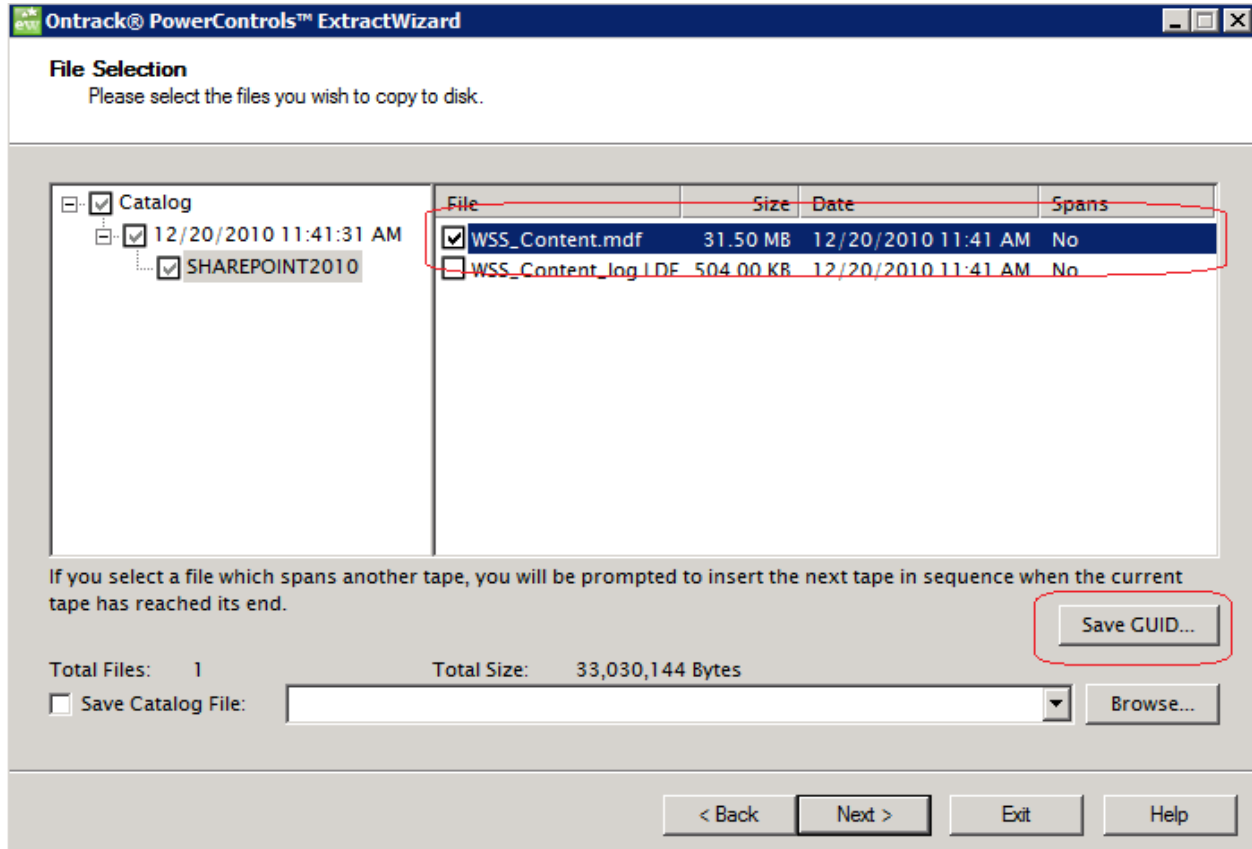
Under Extract from Disk, select the Browse button and choose the .xml or if no .xml is available, select the .bak file (.xml is the fastest option):



Under the Catalog Performance Options screen select the Catalog SharePoint backup datasets only:



Once the Backup has finished the catalog process, expand your backup selections to display your content database names:



Select your first content database then click Save GUID. A browse box will open to allow you to save the GUID as a .txt file. Each content database must be saved to a different .txt file. Please be sure to enter a unique name for each file.

Send the newly created .txt files to your Ontrack representative for the creation of a permanent license.

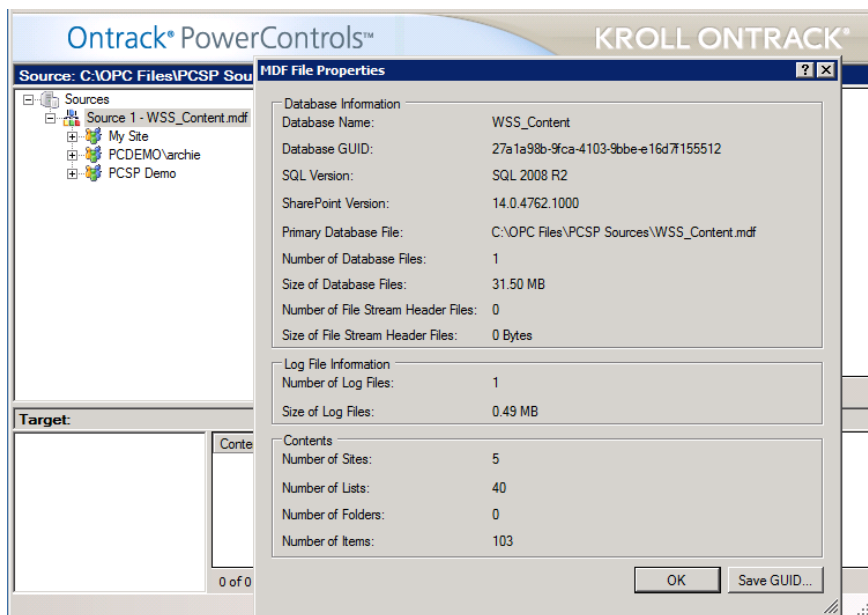
## Option 2: GUID collection using PowerControls for SharePoint

If offline copies of your content databases are available PowerControls for SharePoint can acquire the GUIDs directly from the databases.

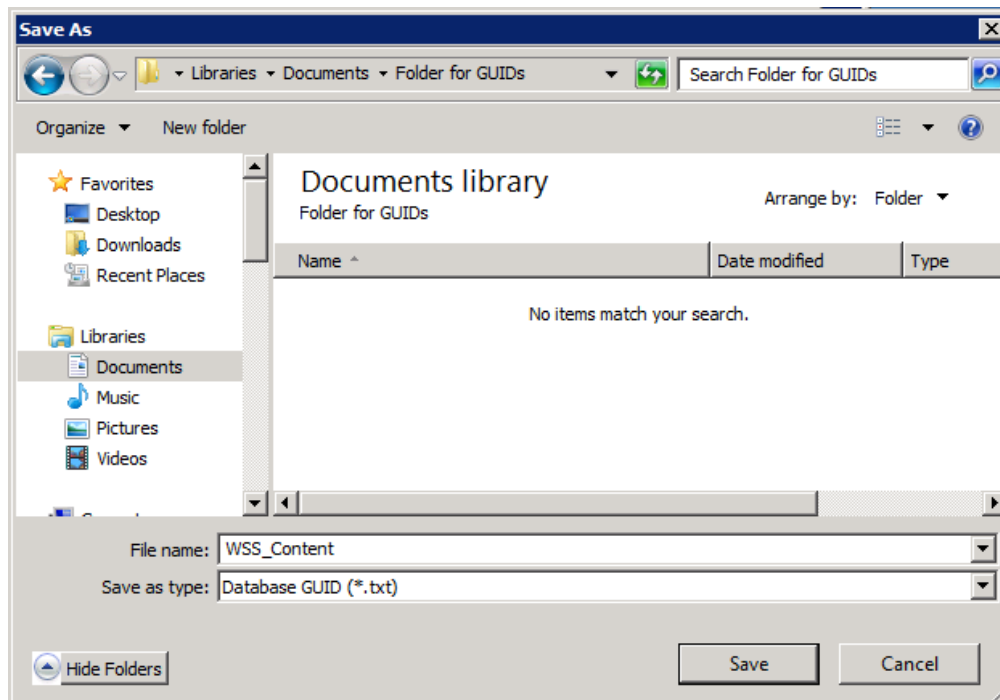
Use the Data Wizard or Open Source options to connect to your SharePoint database files:



Right click on your source database and select Properties:



Select the Save GUID button in the lower right corner. Save a .txt file for each database:



Send your .txt files to your Ontrack representative for the creation of your permanent license.

Please visit our website for further information including documentation, videos, and trial versions for PowerControls for SharePoint or our other products and services. You can find a link to any of our global locations at <http://www.krollontrack.com/company/contact-us>, by selecting the **Location (change)** drop down menu at the top of the page.